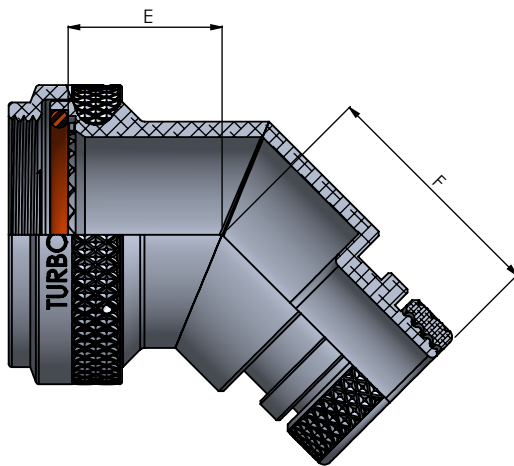
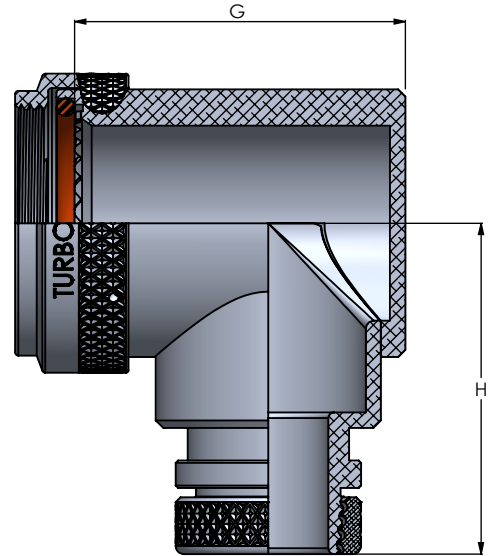


S = STRAIGHT



F = 45 DEGREE



N = 90 DEGREE

ORDERING INFORMATION

TB 61 - H 3 S VB - 17 08 - 8

BRAND IDENTIFIER

PRODUCT SERIES CODE

CONNECTOR INTERFACE
(SEE PAGE - B)

COUPLING RING OPTION
(SEE PAGE - C)

ANGLE
S = STRAIGHT
F = 45°
N = 90°

LENGTH CODE

ONLY FOR STRAIGHT PARTS. OMIT FOR STANDARD LENGTH - 1.00" (1/2" INCREMENT. FOR EXAMPLE 8 = 4 INCHES)

CABLE ENTRY
(SEE TABLE - II)

SHELL SIZE
(SEE TABLE - I)

MATERIAL & FINISH
(SEE PAGE - D)

**** CUSTOMIZATION POSSIBLE**

		DATE
DRAWN :	VN	26-12-2020
CHECKED :	AD	26-12-2020
APPROVED :	MR	26-12-2020



TURBO INDIA

INTERCONNECT SOLUTIONS LLP

#114, 1st Floor, P C Industrial Estate, Kamakshipalya, Magadi Rd, Bangalore 560 079, Karnataka, India

THIS DRAWING IS COPYRIGHT AND THE PROPERTY OF TURBO INDIA INTERCONNECT SOLUTIONS. IT MUST NOT BE COPIED, USED FOR MANUFACTURE OR OTHERWISE DISCLOSED WITHOUT PRIOR WRITTEN CONSENT OF THE COMPANY.

UNLESS OTHERWISE SPECIFIED : ALL DIMENSIONS IN MILLIMETRES
GENERAL TOL: LINEAR : ± 0.10MM
ANGULAR : ± 2°

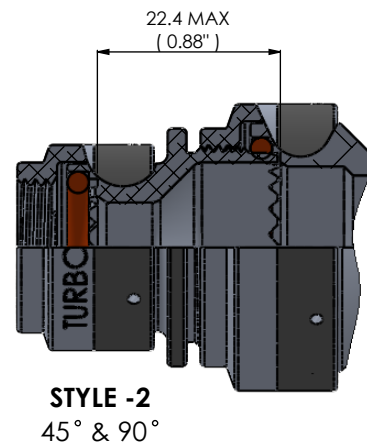
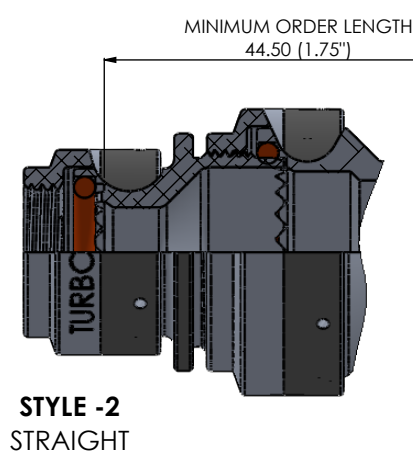
MATERIAL :	---	REV.No 01
WEIGHT :	---	
ASSEMBLY USED ON:		

DESCRIPTION :	
EMI /RFI - LAMP BASE THREAD ADAPTER	
PART NUMBER / SERIES:	PAGE:NO
SERIES 61	24

TABLE - I SHELL SIZE							
CONNECTOR DESIGNATOR			RING DIMENSION	ELBOW DIMENSIONS			
A & B	F & D	H	Ø C MAX	E MAX	F MAX	G MAX	H MAX
08	08	09	22.48	17.10	19.90	25.00	26.50
10	10	11	25.65	17.30	20.60	27.00	28.20
12	12	13	28.83	17.80	21.10	29.50	32.70
14	14	15	32.00	18.60	21.90	31.00	31.20
16	16	17	35.18	19.50	22.70	34.50	32.90
18	18	19	38.35	19.70	23.00	37.50	34.60
20	20	21	41.53	20.60	23.90	42.50	36.20
22	22	23	44.70	20.80	24.30	44.50	37.60
24	24	25	47.88	22.30	25.10	45.50	39.10

TABLE- II CABLE ENTRY		
DASH NO	Ø J +0.20	Ø K MAX
03	4.7	15.2
04	6.3	15.2
05	7.9	16.8
06	9.5	18.4
07	11.1	20.0
08	12.7	21.6
09	14.2	23.2
10	15.8	24.8
11	17.4	26.4
12	19.0	27.9
13	20.6	29.5
14	22.2	31.1
15	23.8	32.7
16	25.4	34.3
17	27.0	35.9
18	28.6	37.5
19	30.2	39.3
20	31.8	40.6
21	33.3	42.2
22	35.0	43.8
23	36.5	45.4
24	38.1	47.0

1. WHEN MAXIMUM CABLE ENTRY IS EXCEEDED , STYLE-2 WILL BE SUPPLIED . IN THAT CONDITION, DIMENSIONS E,F,G AND H WILL NOT APPLY.
2. FOR ANY KIND OF CUSTOMISATION/SHELL SIZE ON THIS BACKSHELL, FOR TERMINATION BANDS AND OTHER ACCESSORIES REACHOUT TO US ON sales@turboindia.co.in



		DATE
DRAWN :	VN	26-12-2020
CHECKED :	AD	26-12-2020
APPROVED :	MR	26-12-2020



TURBO INDIA
INTERCONNECT SOLUTIONS LLP
#114, 1st Floor, P C Industrial Estate, Kamakshipalya,
Magadi Rd, Bangalore 560 079, Karnataka, India

THIS DRAWING IS COPYRIGHT AND THE PROPERTY OF TURBO INDIA INTERCONNECT SOLUTIONS. IT MUST NOT BE COPIED, USED FOR MANUFACTURE OR OTHERWISE DISCLOSED WITHOUT PRIOR WRITTEN CONSENT OF THE COMPANY.

UNLESS OTHERWISE SPECIFIED :
ALL DIMENSIONS IN MILLIMETRES
GENERAL TOL:
LINEAR : ± 0.10MM
ANGULAR : ± 2°

MATERIAL :	---	REV.No 01
WEIGHT :	---	
ASSEMBLY USED ON:		

DESCRIPTION :	
EMI /RFI - LAMP BASE THREAD ADAPTER	
PART NUMBER / SERIES:	PAGE:NO
SERIES 61	25