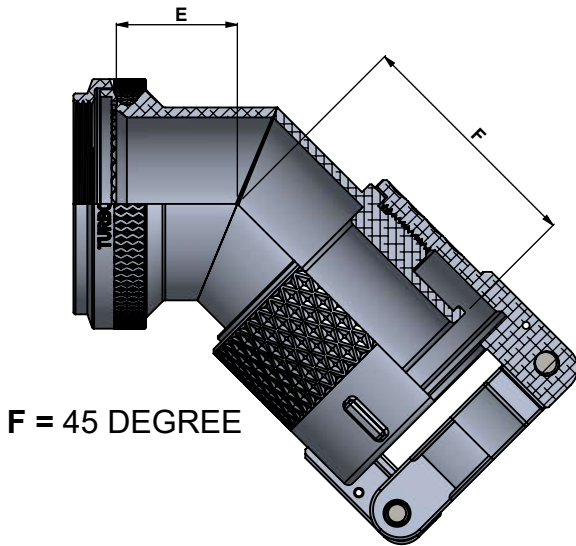
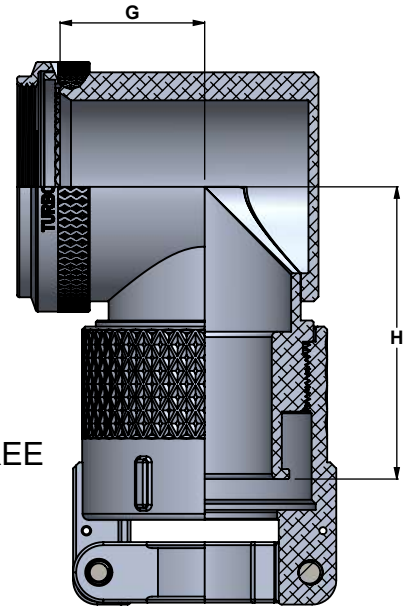


**FOR A-THREAD DIMENSIONS AND MAX ENTRY SIZE REFER PAGE-H

S = STRAIGHT



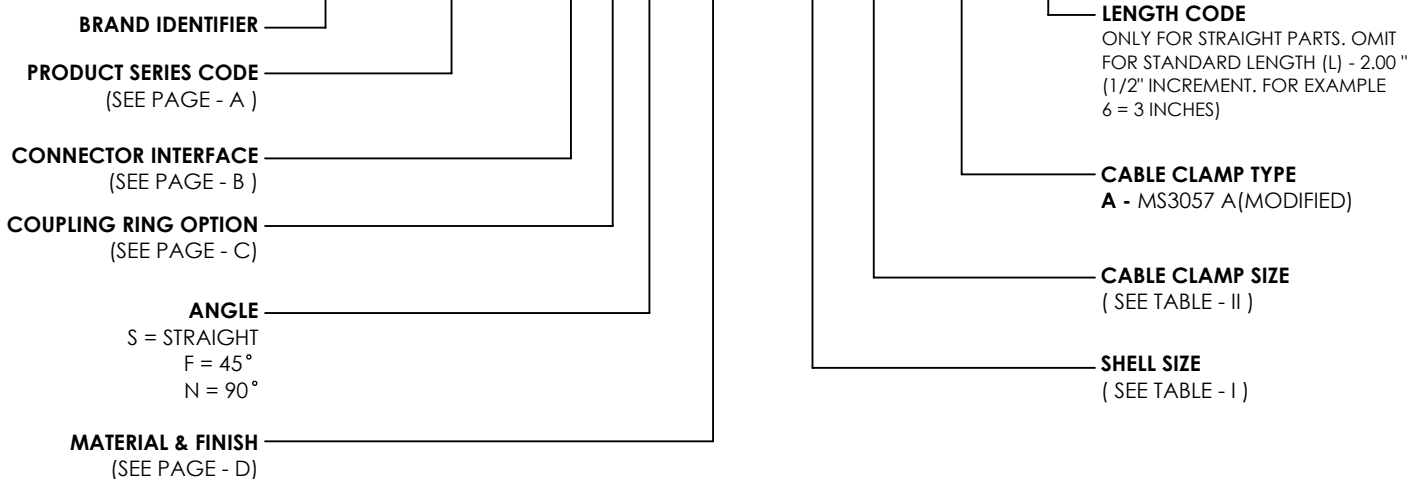
F = 45 DEGREE



N = 90 DEGREE

ORDERING INFORMATION

TB 160-02 - H 3 F VB - 23 16 - A - 6



REVISIONS				DRAWN :	AD	DATE
REV NO.	REVISED BY	DATE OF REV	APPROVED BY	CHECKED :	AD	30-01-2020
01	VN	06-01-2021	AD	APPROVED :	MR	30-01-2020



TURBO INDIA
 INTERCONNECT SOLUTIONS
 #114, 1st Floor, P C Industrial Estate, Kamakshipalya,
 Magadi Rd, Bangalore 560 079, Karnataka, India

THIS DRAWING IS COPYRIGHT AND THE PROPERTY OF TURBO INDIA INTERCONNECT SOLUTIONS. IT MUST NOT BE COPIED, USED FOR MANUFACTURE OR OTHERWISE DISCLOSED WITHOUT PRIOR WRITTEN CONSENT OF THE COMPANY.

UNLESS OTHERWISE SPECIFIED :
 ALL DIMENSIONS IN MILLIMETRES
 GENERAL TOL:
 LINEAR : ± 0.10MM
 ANGULAR : ± 2°

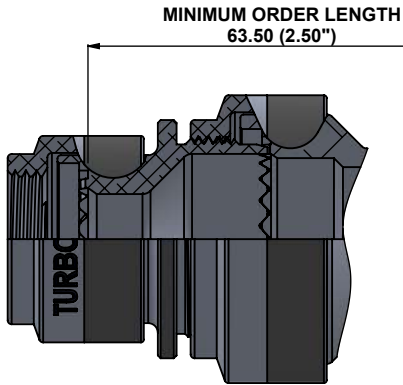
MATERIAL :	---	REV.No 01
WEIGHT :	---	
ASSEMBLY USED ON:		

DESCRIPTION : BAND-IN-A-CAN ADAPTERS, NON-ENVIRONMENTAL	
PART NUMBER / SERIES: SERIES 160-02	PAGE:NO 41

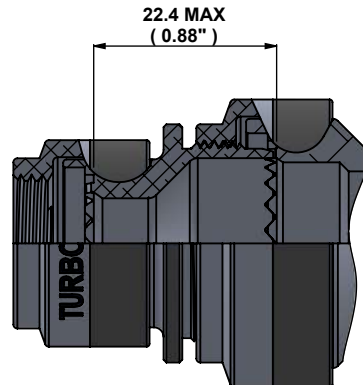
TABLE - I SHELL SIZE							
CONNECTOR DESIGNATOR			RING DIMENSION	ELBOW DIMENSIONS			
A	F & D	H	Ø C MAX	E MAX	F MAX	G MAX	H MAX
08	08	09	22.48	21.00	35.10	23.80	38.10
10	10	11	25.65	21.60	35.80	25.30	39.40
12	12	13	28.83	22.20	36.30	26.90	40.90
14	14	15	32.00	22.70	37.10	28.10	42.70
16	16	17	35.18	23.40	37.60	29.70	44.20
18	18	19	38.35	23.80	37.80	30.70	44.70
20	20	21	41.53	24.40	38.40	32.20	46.20
22	22	23	44.70	25.10	39.40	33.70	48.30
24	24	25	47.88	25.70	40.10	35.20	50.00

TABLE- II CABLE CLAMP SIZE				
DASH NO	Ø K MAX	CABLE RANGE		L MAX
		Ø M MIN	Ø M MAX	
04	7.90	6.40	9.70	31.80
06	11.20	7.90	11.20	34.00
08	14.20	9.50	16.00	37.30
10	16.00	14.20	17.50	39.60
12	19.10	16.00	19.10	41.10
16	22.40	19.10	22.40	44.50

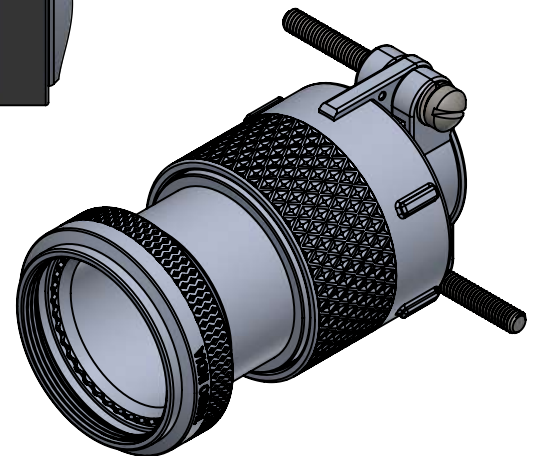
1. WHEN MAXIMUM CABLE ENTRY IS EXCEEDED , STYLE-2 WILL BE SUPPLIED . IN THAT CONDITION, DIMENSIONS E,F,G AND H WILL NOT APPLY.
2. FOR ANY KIND OF CUSTOMISATION ON THIS BACKSHELL, FOR TERMINATION BANDS AND OTHER ACCESSORIES REACHOUT TO US ON sales@turboindia.co.in



STYLE -2
STRAIGHT



STYLE -2
45° & 90°



		DATE
DRAWN :	AD	30-01-2020
CHECKED :	AD	30-01-2020
APPROVED :	MR	30-01-2020



TURBO INDIA
INTERCONNECT SOLUTIONS
#114, 1st Floor, P C Industrial Estate, Kamakshipalya,
Magadi Rd, Bangalore 560 079, Karnataka, India

THIS DRAWING IS COPYRIGHT AND THE PROPERTY OF TURBO INDIA INTERCONNECT SOLUTIONS. IT MUST NOT BE COPIED, USED FOR MANUFACTURE OR OTHERWISE DISCLOSED WITHOUT PRIOR WRITTEN CONSENT OF THE COMPANY.

UNLESS OTHERWISE SPECIFIED :
ALL DIMENSIONS IN MILLIMETRES
GENERAL TOL:
LINEAR : ± 0.10MM
ANGULAR : ± 2°

MATERIAL : ---
WEIGHT : ---

REV.No
01

ASSEMBLY USED ON:

DESCRIPTION :
**BAND-IN-A-CAN ADAPTERS,
NON - ENVIRONMENTAL**

PART NUMBER / SERIES:
SERIES 160-02

PAGE:NO
42