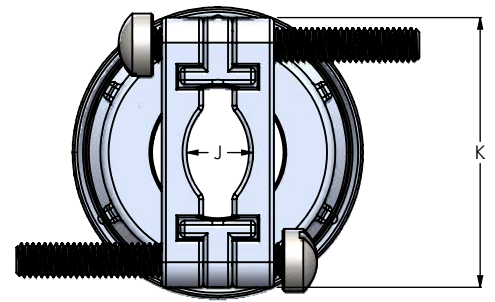
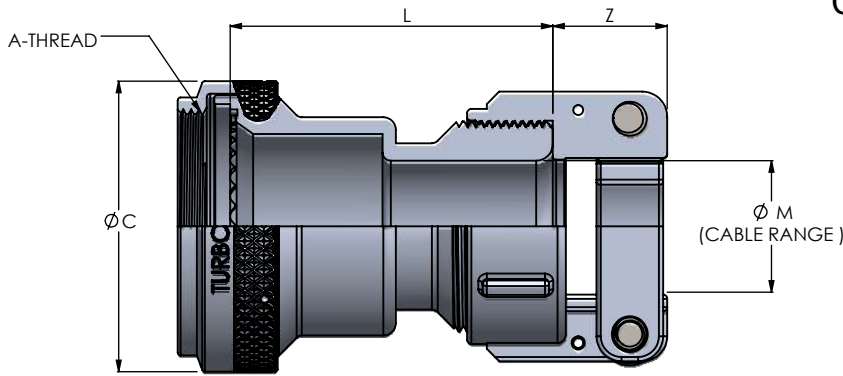
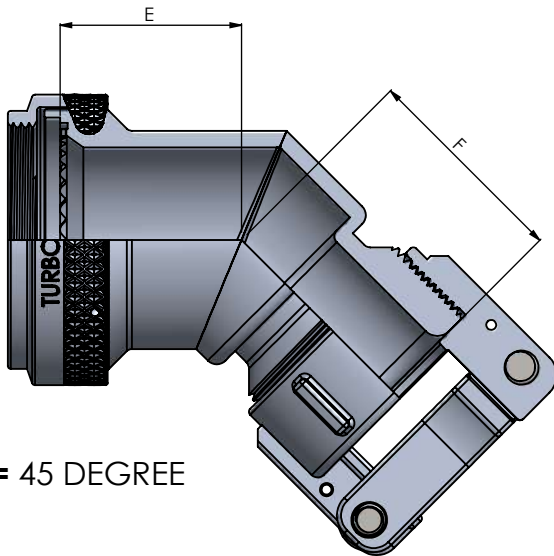


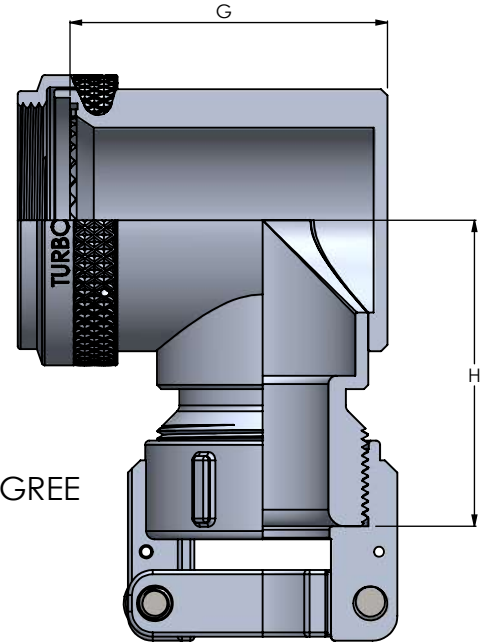
CLAMP OPTION - TYPE A CLAMP



S = STRAIGHT



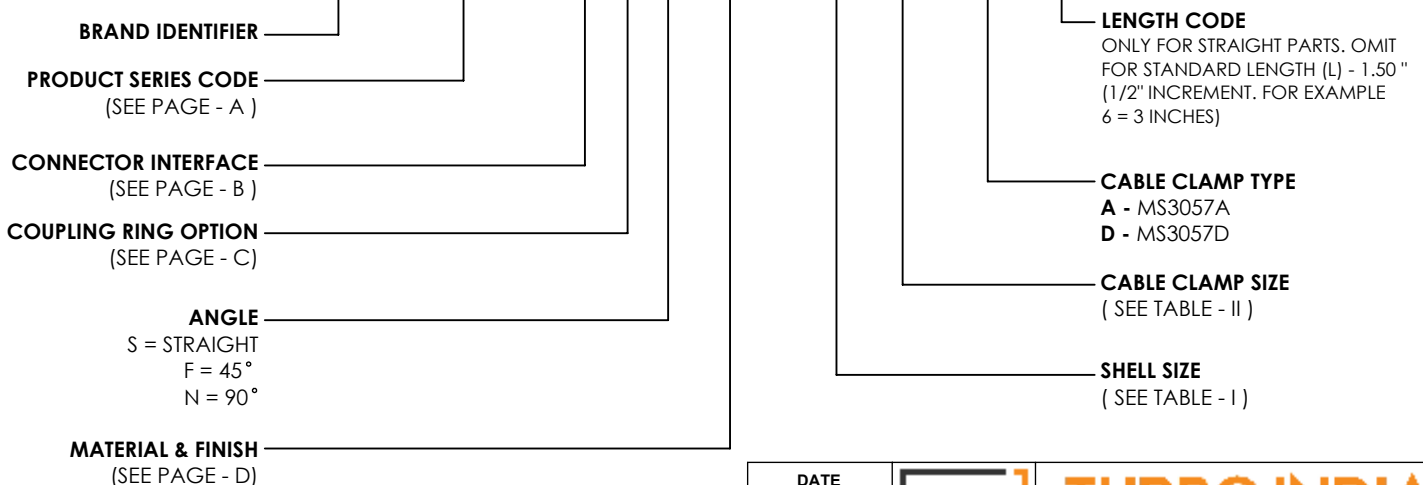
F = 45 DEGREE



N = 90 DEGREE

ORDERING INFORMATION

TB 110-02 - A 3 N VO - 19 09 - A - 6



** CUSTOMIZATION POSSIBLE

		DATE
DRAWN :	VN	28-12-2020
CHECKED :	AD	28-12-2020
APPROVED :	MR	28-12-2020



TURBO INDIA
 INTERCONNECT SOLUTIONS LLP
 #114, 1st Floor, P C Industrial Estate, Kamakshipalya,
 Magadi Rd, Bangalore 560 079, Karnataka, India

THIS DRAWING IS COPYRIGHT AND THE PROPERTY OF TURBO INDIA INTERCONNECT SOLUTIONS. IT MUST NOT BE COPIED, USED FOR MANUFACTURE OR OTHERWISE DISCLOSED WITHOUT PRIOR WRITTEN CONSENT OF THE COMPANY.

UNLESS OTHERWISE SPECIFIED : ALL DIMENSIONS IN MILLIMETRES
 GENERAL TOL: LINEAR : ± 0.10MM
 ANGULAR : ± 2°

MATERIAL :	---	REV.No 01
WEIGHT :	---	
ASSEMBLY USED ON:		

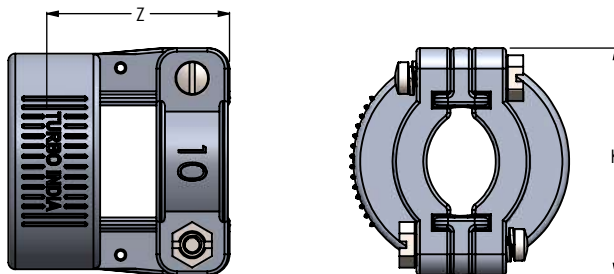
DESCRIPTION :		
CABLE CLAMP ADAPTER - NON ENVIRONMENTAL , NON SCREENED		
PART NUMBER / SERIES:	SERIES 110 -02	PAGE:NO 30

TABLE - I SHELL SIZE							
CONNECTOR DESIGNATOR			RING DIMENSION	ELBOW DIMENSIONS			
A & B	F & D	H	ϕ C MAX	E MAX	F MAX	G MAX	H MAX
08	08	09	22.48	14.40	22.40	24.20	29.70
10	10	11	25.65	15.20	23.10	27.10	31.20
12	12	13	28.83	15.60	23.60	30.20	32.80
14	14	15	32.00	16.10	24.40	31.70	34.30
16	16	17	35.18	16.70	24.90	34.90	36.10
18	18	19	38.35	17.20	25.40	36.20	36.80
20	20	21	41.53	17.80	25.90	39.40	38.40
22	22	23	44.70	18.50	26.70	42.60	39.90
24	24	25	47.88	19.30	27.20	45.80	41.40

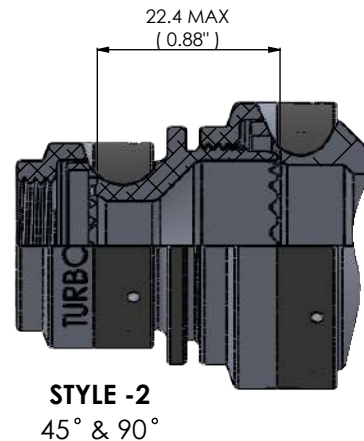
TABLE- II TYPE A - CABLE CLAMP SIZE				
DASH NO	ϕ M +0.20	K MAX	J MAX	Z MAX
04	6.3	21.4	4.0	11.5
05	7.9	23.0	4.8	11.5
07	11.1	27.8	7.1	13.1
09	14.2	30.1	8.7	14.7
10	15.8	32.5	9.5	14.7
12	19.0	38.1	11.1	14.7
15	23.8	43.7	14.3	17.1

TABLE- II TYPE D - CABLE CLAMP SIZE				
DASH NO	ϕ M +0.20	K MAX	J MAX	Z MAX
05	7.9	24.3	4.2	19.8
07	11.1	29.1	7.3	19.8
09	14.2	33.8	8.7	19.8
10	15.8	33.8	9.5	19.8
12	19.0	39.4	13.2	20.6
15	23.8	45.0	16.3	23.0

CLAMP OPTION - TYPE D CLAMP



1. WHEN MAXIMUM CABLE ENTRY IS EXCEEDED , STYLE-2 WILL BE SUPPLIED . IN THAT CONDITION, DIMENSIONS E,F,G AND H WILL NOT APPLY.
2. FOR ANY KIND OF CUSTOMISATION/SHELL SIZE ON THIS BACKSHELL, FOR TERMINATION BANDS AND OTHER ACCESSORIES REACHOUT TO US ON sales@turboindia.co.in



		DATE
DRAWN :	VN	28-12-2020
CHECKED :	AD	28-12-2020
APPROVED :	MR	28-12-2020



TURBO INDIA
INTERCONNECT SOLUTIONS LLP
#114, 1st Floor, P C Industrial Estate, Kamakshipalya,
Magadi Rd, Bangalore 560 079, Karnataka, India

THIS DRAWING IS COPYRIGHT AND THE PROPERTY OF TURBO INDIA INTERCONNECT SOLUTIONS. IT MUST NOT BE COPIED, USED FOR MANUFACTURE OR OTHERWISE DISCLOSED WITHOUT PRIOR WRITTEN CONSENT OF THE COMPANY.

UNLESS OTHERWISE SPECIFIED :
ALL DIMENSIONS IN MILLIMETRES
GENERAL TOL:
LINEAR : ± 0.10 MM
ANGULAR : $\pm 2^\circ$

MATERIAL : ---
WEIGHT : ---

REV.No
01

ASSEMBLY USED ON:

DESCRIPTION :
CABLE CLAMP ADAPTER -
NON ENVIRONMENTAL , NON SCREENED

PART NUMBER / SERIES:
SERIES 110 -02

PAGE:NO
31